

ENERGY BARGE

Building a Green Energy and Logistics Belt

Praha, 30.5.2017

Wolfgang Dorner

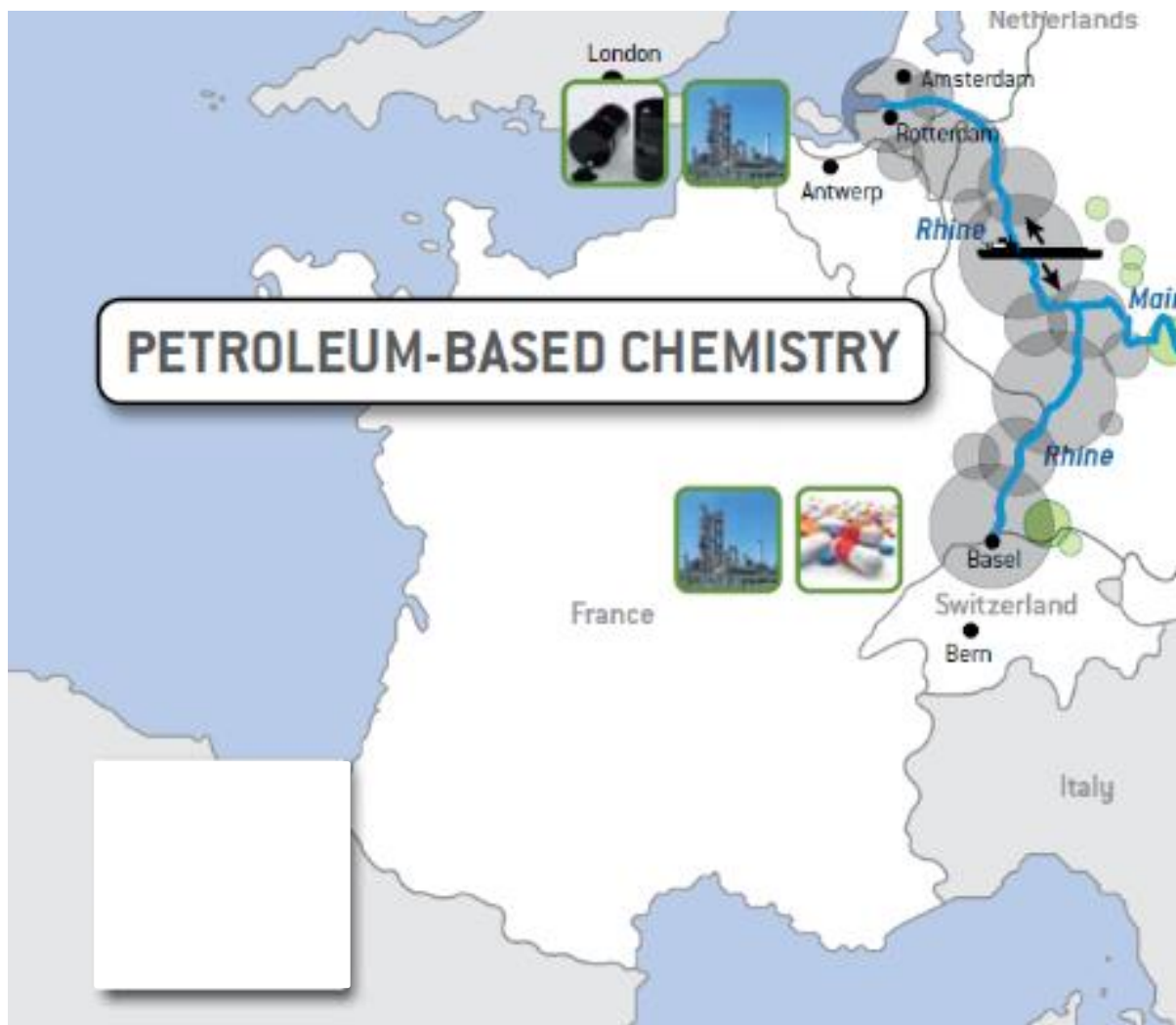


Straubing Harbour



Straubing Harbour & Industrial Park

The Petroleum Belt



The new belt

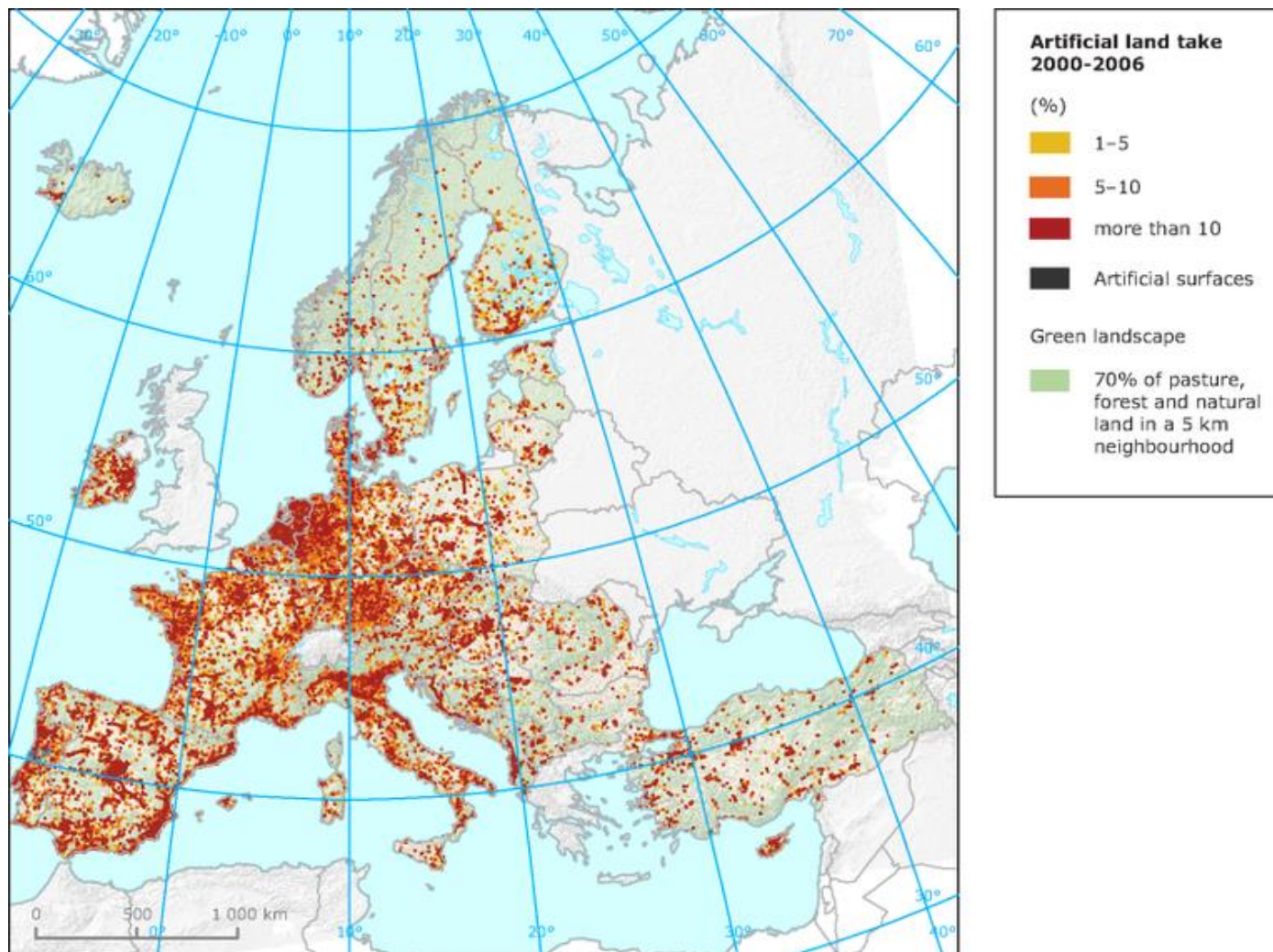


GREEN CHEMISTRY BELT

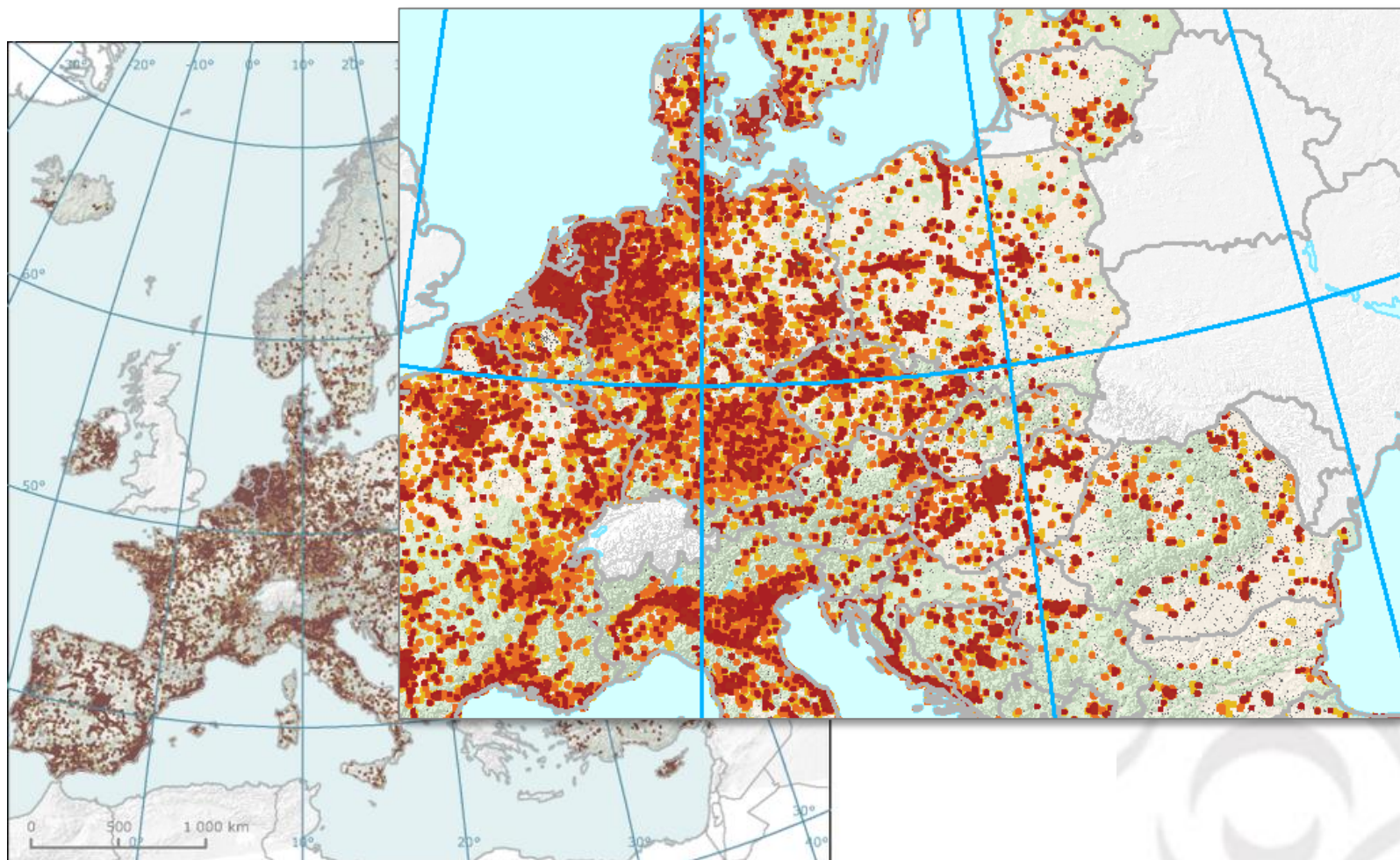


WE'VE GOT THE RESOURCES

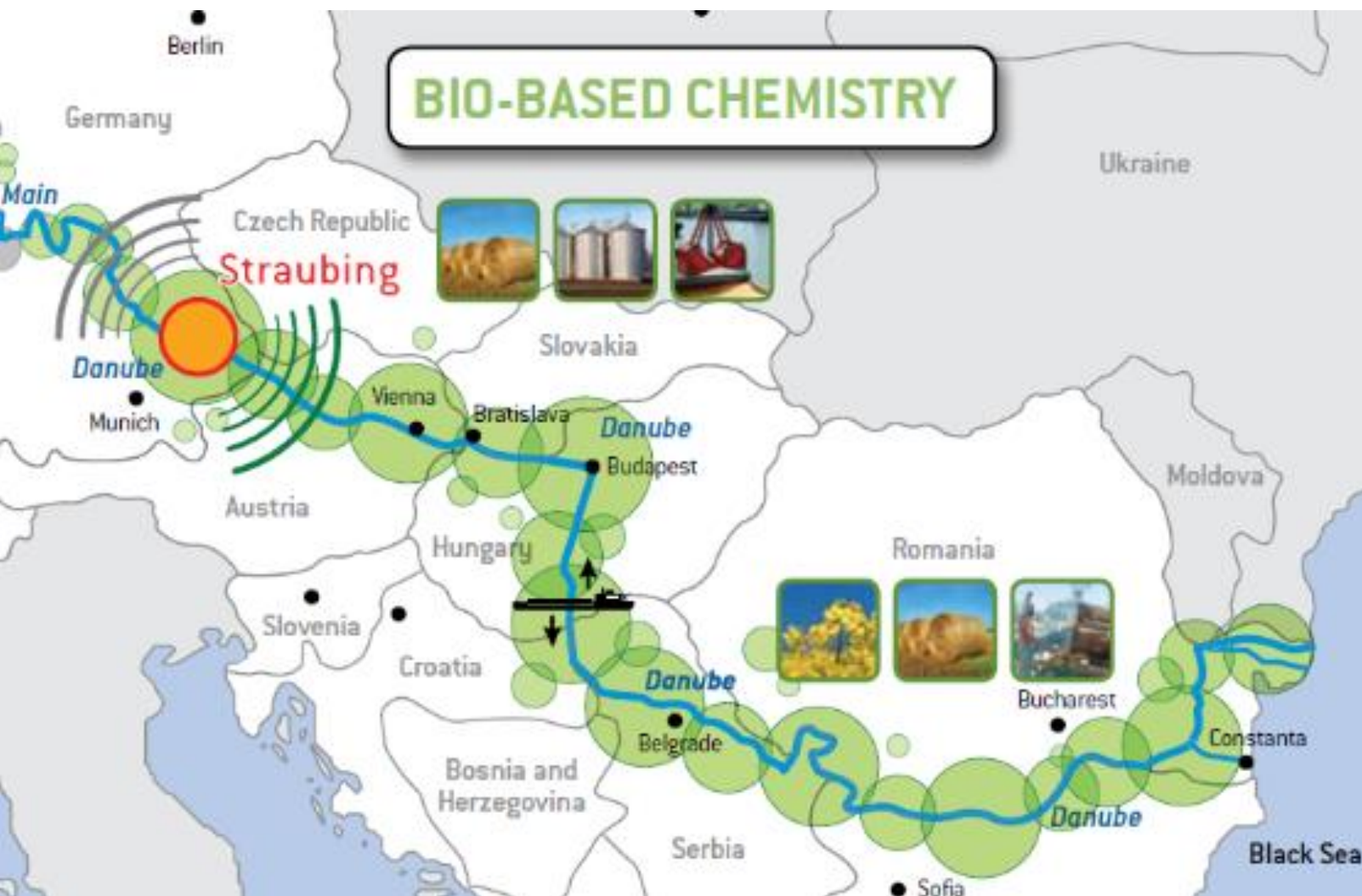
The Green Chemistry Belt



The Green Chemistry Belt



The Green Chemistry Belt





The project

Start date: 01/01/2017

End date: 30/06/2019

Budget

Overall: 2,323,519.65 Euro

ERDF Contribution: 1,974,991.67 Euro

15 Project partners

8 Associated partners

Partner

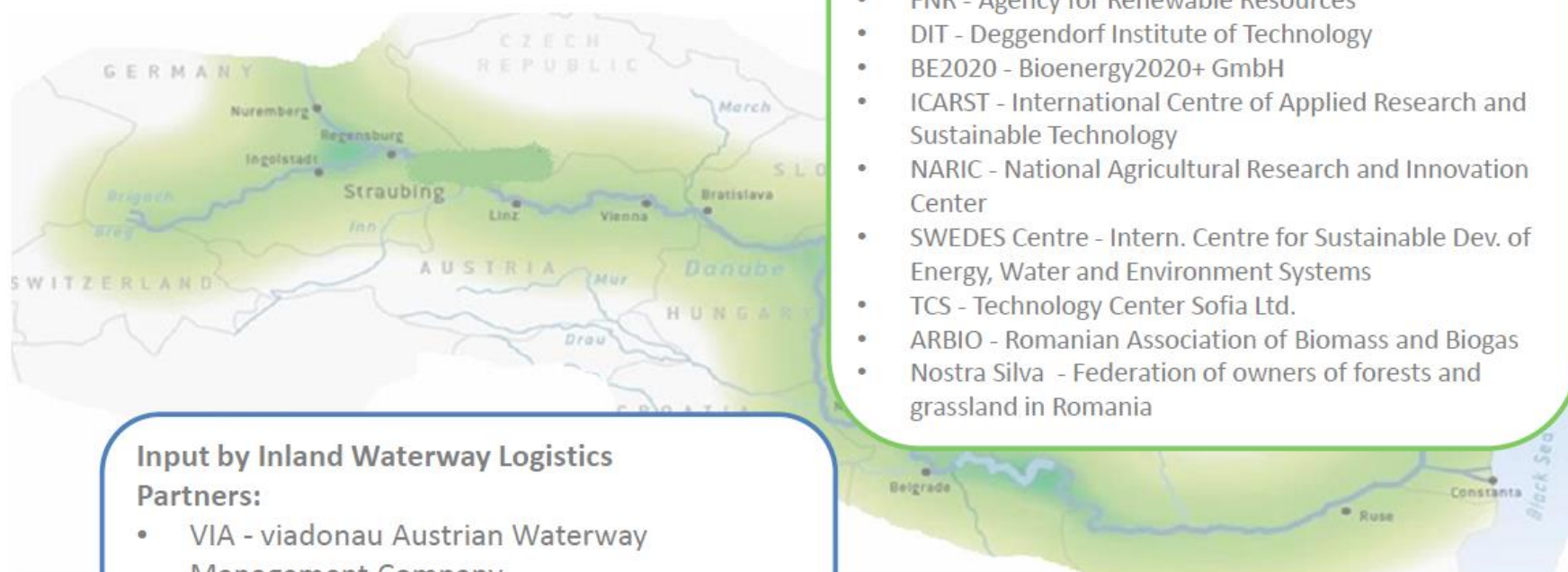
Bioenergy Partners:

- BCG - Biocampus Straubing GmbH
- FNR - Agency for Renewable Resources
- DIT - Deggendorf Institute of Technology
- BE2020 - Bioenergy2020+ GmbH
- ICARST - International Centre of Applied Research and Sustainable Technology
- NARIC - National Agricultural Research and Innovation Center
- SWEDES Centre - Intern. Centre for Sustainable Dev. of Energy, Water and Environment Systems
- TCS - Technology Center Sofia Ltd.
- ARBIO - Romanian Association of Biomass and Biogas
- Nostra Silva - Federation of owners of forests and grassland in Romania

Input by Inland Waterway Logistics

Partners:

- VIA - viadonau Austrian Waterway Management Company
- PoVi - Port of Vienna
- PoVU – Port of Vukovar
- MAHART - MAHART Freeport Co. Ltd
- SPaP – Slovak Shipping and Ports JSC



Participatory levels

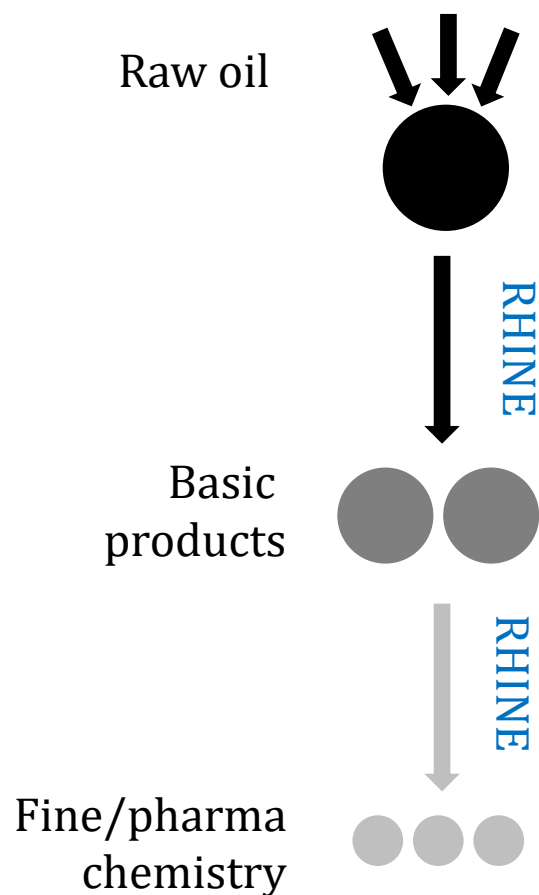
Danube Scale	<ul style="list-style-type: none"> • Infrastructure • Resource availability • Value chain • Legal Framework • ...
Regional Scale	<ul style="list-style-type: none"> • Infrastructure • Land use planning • Investments and building • Economic development • ...
Local Scale	<ul style="list-style-type: none"> • Land use • Agriculture • Building • Start ups • ...

**ENERGY
BARGE**

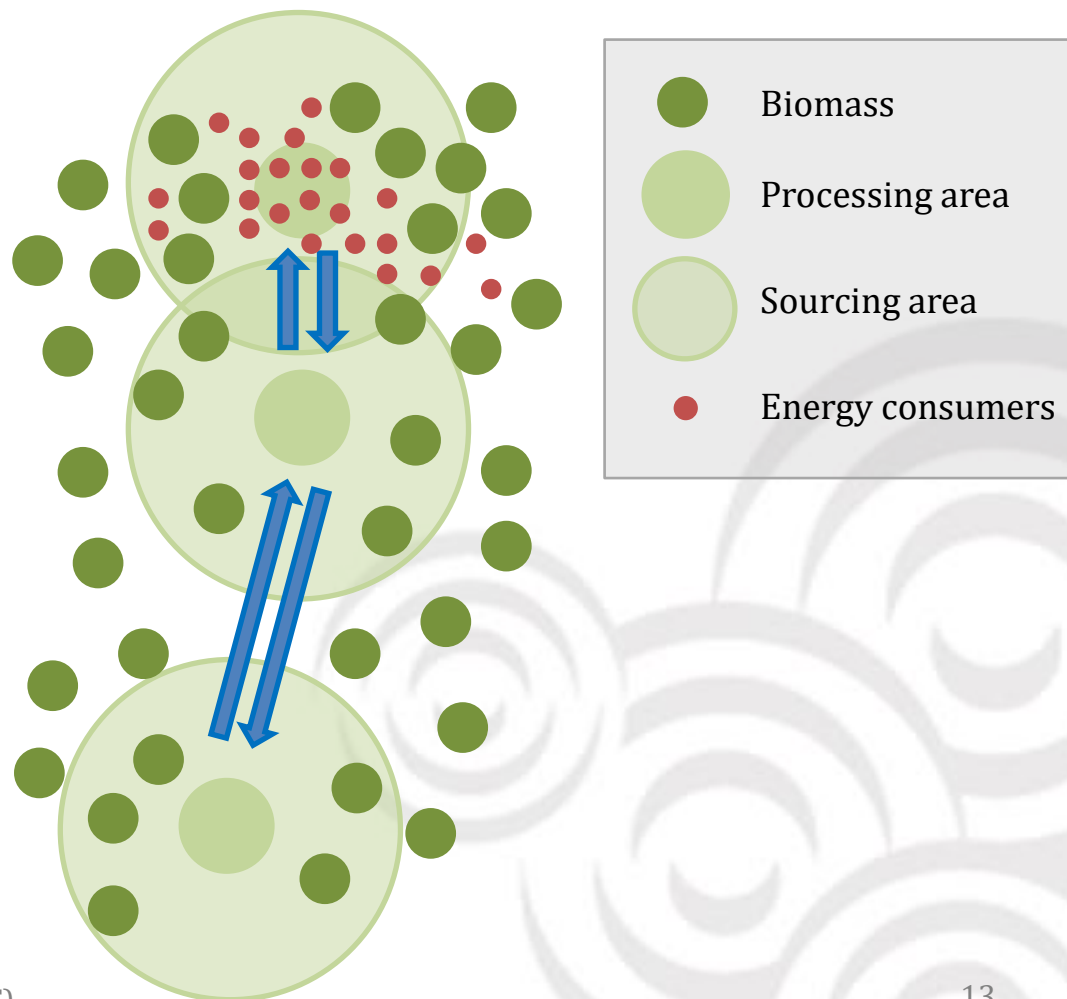


The Green Chemistry Belt

Fossil based value chain



Biomass based value chain

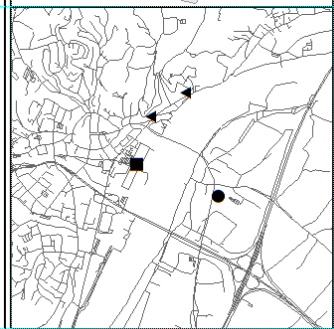
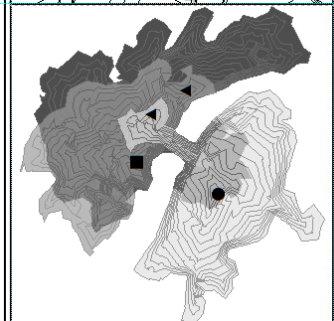
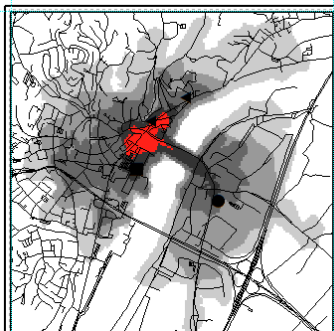


The Green Chemistry Belt



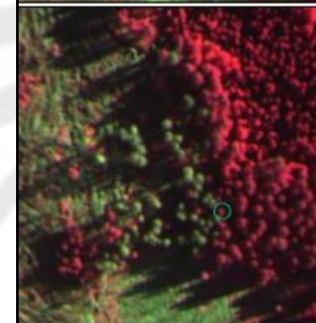
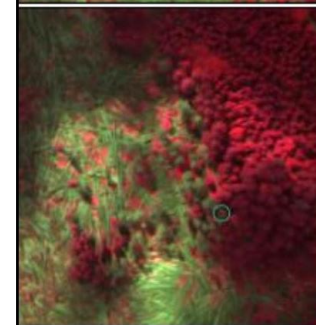
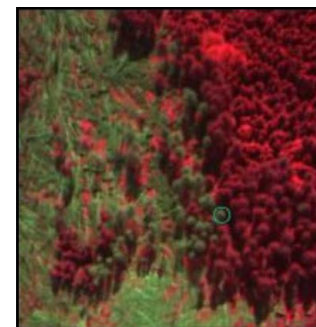
© OpenStreetMap-Mitwirkende ▼ St

The Green Chemistry Belt



Analysis of
traffic and
logistic
infrastructure

Analysis of
land use
and potential
for biomass



Participatory levels

Danube Scale

- Infrastructure
- Resource availability
- Value chain
- Legal Framework
- ...

Regional Scale

- Infrastructure
- Land use planning
- Investments and building
- Economic development
- ...

Local Scale

- Land use
- Agriculture
- Building
- Start ups
- ...

ENERGY
BARGE



Broad participation



Digital participation



Start Was ist PUBinPLAN Karte Projekte

PUBinPLAN is the digital voice



PUBinPLAN involves the broad public.

Digital participation

PUBinPLAN **visualizes** visions.





Prof. Dr. Wolfgang Dorner

Institut für angewandte Informatik
Technische Hochschule Deggendorf

+49 – 8551 – 91 764 -10

wolfgang.dorner@th-deg.de